

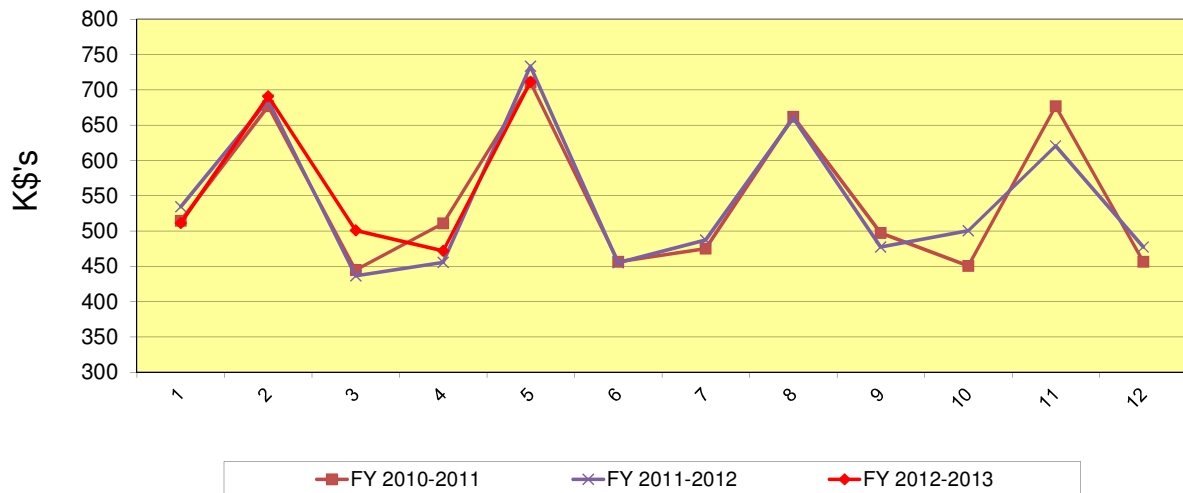
CITY OF HUNTSVILLE
COMPARISON OF SALES TAX RECEIPTS

	%CHG	FY 2012-2013	FY 2011-2012	FY 2010-2011	FY 2009-2010	FY 2008-2009	FY 2007-2008	FY 2006-2007
OCTOBER	-4.3%	\$ 511,329.75	\$ 534,376.21	\$ 514,336.92	\$ 479,613.13	\$ 437,261.54	\$ 520,599.22	\$ 429,295.10
NOVEMBER	0.8%	\$ 690,885.00	\$ 685,508.98	\$ 676,677.15	\$ 606,492.59	\$ 636,333.16	\$ 626,720.62	\$ 591,709.57
DECEMBER	14.8%	\$ 500,929.84	\$ 436,412.10	\$ 444,599.85	\$ 424,499.00	\$ 525,038.13	\$ 450,599.71	\$ 385,140.21
JANUARY	3.5%	\$ 471,607.13	\$ 455,630.00	\$ 510,832.07	\$ 432,862.00	\$ 492,779.34	\$ 372,301.07	\$ 397,527.12
FEBRUARY	-3.0%	\$ 711,352.00	\$ 733,502.42	\$ 710,412.40	\$ 709,851.00	\$ 730,318.69	\$ 695,219.08	\$ 637,867.71
MARCH			\$ 455,064.64	\$ 456,499.00	\$ 447,236.71	\$ 622,347.99	\$ 462,283.80	\$ 424,274.78
APRIL			\$ 487,035.21	\$ 474,927.72	\$ 441,302.99	\$ 435,100.00	\$ 450,235.25	\$ 424,603.70
MAY			\$ 659,707.00	\$ 661,918.00	\$ 641,087.19	\$ 637,835.37	\$ 627,461.48	\$ 632,933.73
JUNE			\$ 477,359.22	\$ 497,153.24	\$ 430,862.97	\$ 493,231.32	\$ 441,516.01	\$ 419,711.63
JULY			\$ 500,224.00	\$ 450,499.20	\$ 421,586.21	\$ 433,027.00	\$ 444,053.71	\$ 441,447.05
AUGUST			\$ 620,698.00	\$ 676,623.84	\$ 602,439.85	\$ 615,717.38	\$ 593,185.72	\$ 590,916.57
SEPTEMBER			\$ 477,306.53	\$ 456,243.55	\$ 427,545.30	\$ 432,239.27	\$ 484,643.38	\$ 435,593.66
TOTALS		\$ 2,886,103.72	\$ 6,522,824.31	\$ 6,530,722.94	\$ 6,065,378.94	\$ 6,491,229.19	\$ 6,168,819.05	\$ 5,811,020.83
Due Developer		(86,401.48)	(177,829.50)	(134,621.24)				
After Developer		\$ 2,799,702.24	\$ 6,344,994.81	\$ 6,396,101.70				

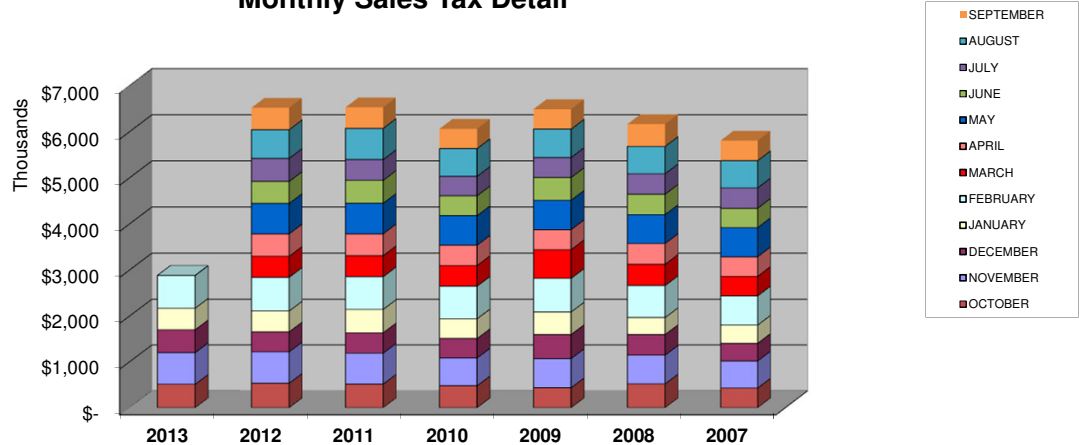
The amount due to developer is for the period of Feb. 2013 and includes all development in Ravenwood Village.

THIS TIME LAST YEAR	\$2,845,430
FY '12 YTD Due Developer	\$ (75,894.29)
	\$2,769,535
% CHANGE	1.09%

COMPARATIVE SALES TAX RECEIPTS



Monthly Sales Tax Detail



Budget for Sales Tax Revenue for FY12-13 is \$6,400,000. On average for the past 6 years, YTD Sales Tax revenue thru February as a percentage of the total year Sales Tax revenue has been 43.7%. 43.7% of \$6,400,000 budget is \$2,796,800; the actual for YTD thru February of \$2,799,702 compared to \$2,796,800 calculates to an over budget amount of \$2,902 (.1%).